



ATEN Video Matrix Switches

Fixed I/O Solutions to Empower Connected Signage



Contents




Introduction	2
Key Features	3
- Video Transmission & Processing	
- Compatibility	
- Control	
- Extra Key Features	
Standard Series	9
Seamless Series	10
HDBaseT™ Series	12
Comparison Table and Optional Accessories	13
Success Stories	15
- Corporate : Meeting Room, Optoma, Taiwan	
- Retail : 4K Distribution Solution, 3C Chain Store, India	
- Transportation : Video Wall, Taipei Main Station, Taiwan	



As AV networks become increasingly complex, whether it is streamlining business operations or maximizing the benefits of media distribution, the use of video matrix switches is paramount in various applications due to the growing number of devices and rooms that need to be connected and managed.

ATEN Video Matrix Switches simplify the task of routing AV signals from multiple input sources to various output destinations. Each input can be directed to any or all outputs, giving you the ultimate flexibility to extend your installation with excellent video quality. No matter the size, environment, or complexity of your installation, each series is optimally designed for any AV application needs.

ATEN Video Matrix Switches

Standard Series	Seamless Series	HDBaseT™ Series
 <p>HDR 4K TRUE</p>		 <p>4K</p>
<p>Offers an easy and cost-effective way to route any input to output with up to True 4K HDR support.</p>	<p>Features ATEN's advanced proprietary technologies for delivering an extra seamless visual experience.</p>	<p>Built on HDBaseT™ technology to deliver AV signals across long distances in combination with ATEN HDBaseT™ Receivers.</p>
Application Characteristics		
<ul style="list-style-type: none"> - Simple AV routing in any space to deliver high-quality AV switching 	<ul style="list-style-type: none"> - Super-fast source switching - Ultra-smooth visual experience for high-motion elements - Video wall visualization 	<ul style="list-style-type: none"> - Installations with long-distance transmission - Flexibility for fast source switching, video walls, and support for high-motion elements
Models		
<p>VM0404HB, VM0808HB, VM0202H, VM0404HA, VM0808HA, VS0202, VM0404</p>	<p>VM6404H, VM6809H, VM5404H, VM5808H, VM51616H, VM5808D</p>	<p>VM3404H, VM3909H</p>

Key Features

ATEN develops and utilizes proprietary technologies to deliver excellent video processing capabilities, as well as adopts human-centric designs for device operation and control. Each series comprises models with outstanding features.

ATEN Video Matrix Switches				
		Standard Series	Seamless Series	HDBaseT™ Series
Models		VM0404HB, VM0808HB, VM0202H, VM0404HA, VM0808HA, VS0202, VM0404	VM6404H, VM6809H, VM5404H, VM5808H, VM51616H, VM5808D	VM3404H, VM3909H
Key Features				
Video Transmission & Processing	HDBaseT™			•
	Seamless Switch™		•	•*
	Scaler		•	•*
	FrameSync		• (VM6404H, VM6809H, VM51616H)	•*
	True 4K, HDR	• (VM0404HB, VM0808HB)		
Compatibility	EDID Expert™	•	•	•
	HDCP Expert	•	•	•
	HDMI Certified***	•	•	•
Control	Built-in Control Interfaces**	Pushbuttons	•	•
		RS-232	•	•
		IR	•	•
		Ethernet	•	•
	Mobile App	•	•	•
	ATEN Control System & 3rd Party Devices	•	•	•
Extra	Audio De-embedding		• (VM6809H, VM51616H)	
	Local Preview Function		• (VM51616H)	
	HDMI LockPro™****	•	•	•

* The availability of these features depends on the ATEN HDBaseT™ Receiver used.

** The supported control interfaces are not available in all models. Please refer to the Comparison Table on pg. 13 for more details.

*** Supported by models with HDMI interfaces.

Video Transmission & Processing

HDBaseT™

ATEN HDBaseT Video Matrix Switches maximize the capabilities of HDBaseT 5Play™ technology to deliver HDMI, Audio, Ethernet, Control, and Power simultaneously over a single cable. Benefits include:

- Long Distance Transmission – Connects sources and displays via one cable up to 70m
- HDBaseT Anti-jamming – Resists signal interference during high-quality video transmission
- Power over HDBaseT (POH) – Supplies power from the switch to the receiver



HDBaseT Authorized Trainer Certificate

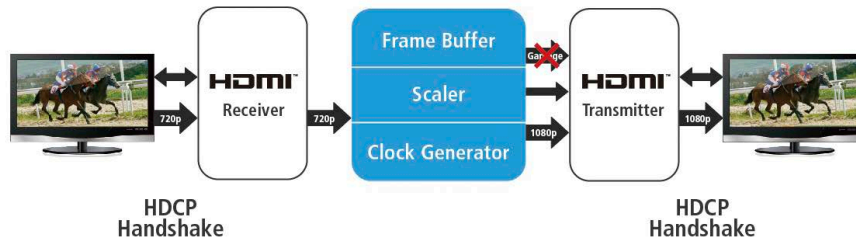


HDBaseT Product Certificate

Seamless Switch™

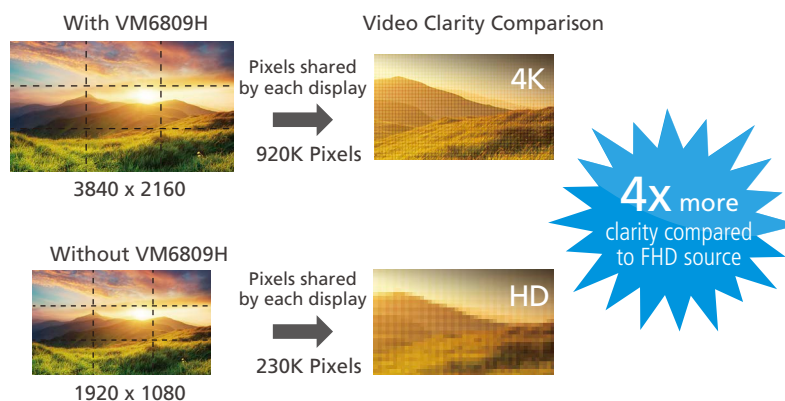
ATEN Seamless Switch™ technology enables close-to-zero second video switching without any black screens. An exclusive seamless engine processes AV signals by executing EDID and HDCP handshakes simultaneously at both source and display ends, scaling inputs for the best output resolution while setting the output clock timing and using a frame buffer to retain input signal information for the fastest output.

Seamless Engine



Scaler Technology

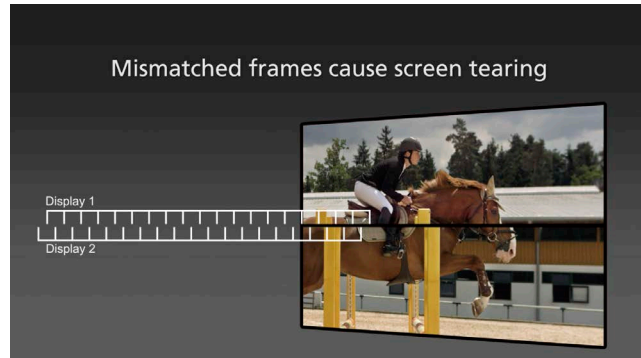
ATEN Video Matrix Switches equipped with Video Wall and Scaler functionalities ensure all input sources are rendered at optimum output resolutions on displays with uncompromised precision. The unique Scaler, utilizing ATEN FPGA technology, guarantees that all video content is delivered across all screens with no delays or signal loss.



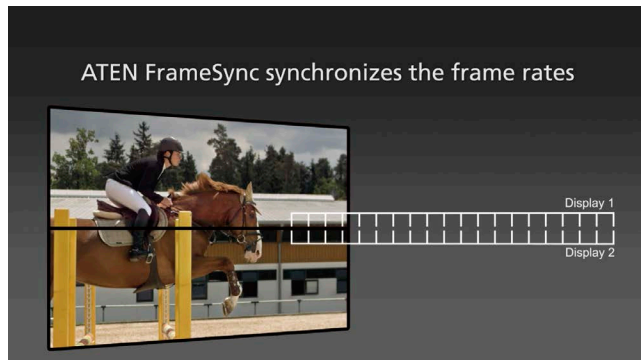
FrameSync

ATEN's FrameSync Technology prevents screen tearing by synchronizing frame rates, guaranteeing smooth video for high-motion elements and ensuring stunning tear-free video walls, especially when a fast-moving object appears on the screen.

Before FrameSync



After FrameSync



True 4K, HDR

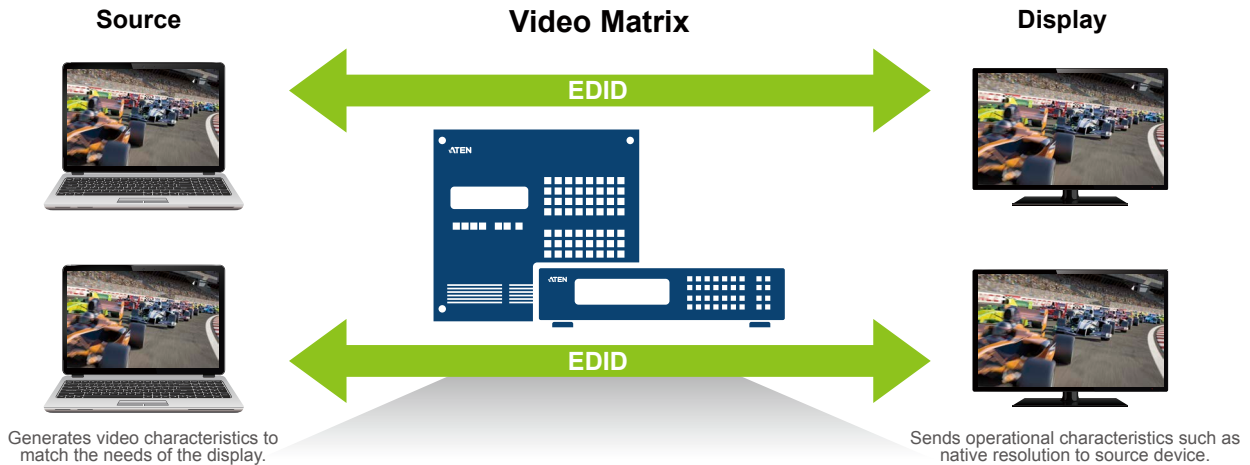
Features models with up to True 4K resolutions with HDR that supports all popular HDR formats on the market, including HDR10+, HDR10, Dolby Vision, and Hybrid Log Gamma (HLG), and both static and dynamic HDR, delivering a much wider range of color and contrast to produce more vivid and vibrant video than ever before.



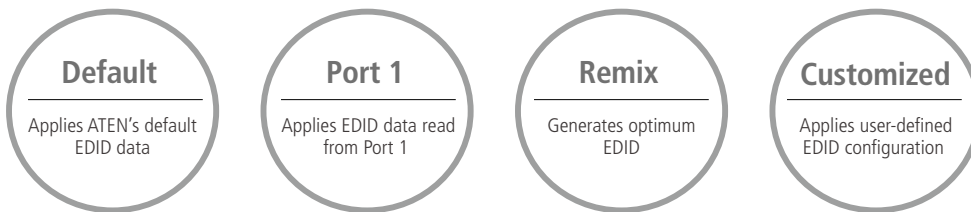
Compatibility

EDID Expert™

The exclusive ATEN EDID Expert™ technology offers applicable EDID modes for selection that optimize the output capability throughout your installations for faster and smoother video performance.



ATEN EDID Expert™ Modes Supported

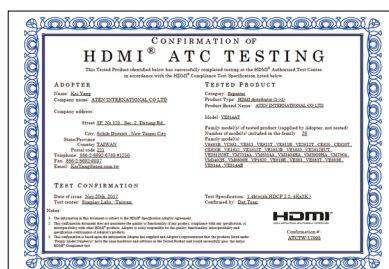


HDCP Expert

For digital signals with protected content, ATEN's unique HDCP technology manages authentication of HDCP-compliant sources and displays, and allows you to select HDCP settings between input and output ports in order to ensure that HDCP-encrypted content can be transmitted and switched reliably without any compatibility issues.

HDMI Certified

As an Adopter of the HDMI specification, ATEN's HDMI products are submitted to Authorized Testing Centers (ATC) for compliance testing and certification. HDMI certification assures the reliability and performance of HDMI products according to the HDMI specification as well as validation according to leading industry standards. Identify our HDMI-certified products by the HDMI logo.



Control

Built-in Control Interfaces

ATEN Video Matrix Switches offer multiple built-in control options for you to select from, including pushbuttons, IR remote control, RS-232 and Ethernet interfaces, as well as the award-winning Web Graphical User Interface (GUI).



Pushbuttons

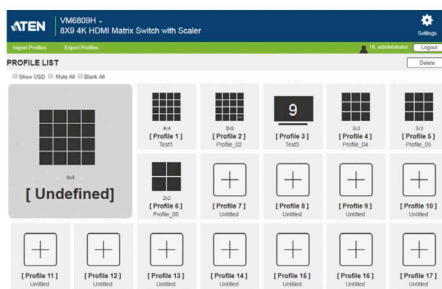


IR Remote Control



RS-232 & Ethernet

Award-winning Web GUI



Create custom Digital Signage and Video Wall Layouts



reddot award 2015
winner interface design

ATEN Video Matrix Control App*

The ATEN Video Matrix Control App is a free mobile app for iOS and Android. It provides direct access to manage ATEN Video Matrix Switches, making control easier than ever before.

- Profile Change: Select and apply profile via visualized Profile ID
- Source Switching: Switch input sources instantly via graphical layout preview
- Audio Control: Turn on/off or embed/de-embed audio with ease



* Please see ATEN website for VM model app support.

ATEN Control System and 3rd Party Devices

By supporting RS-232, Telnet protocols, the ATEN Video Matrix easily integrates with the ATEN Control System as well as 3rd-party devices, enabling you to conveniently configure your entire installation to work together or integrate into any existing network.



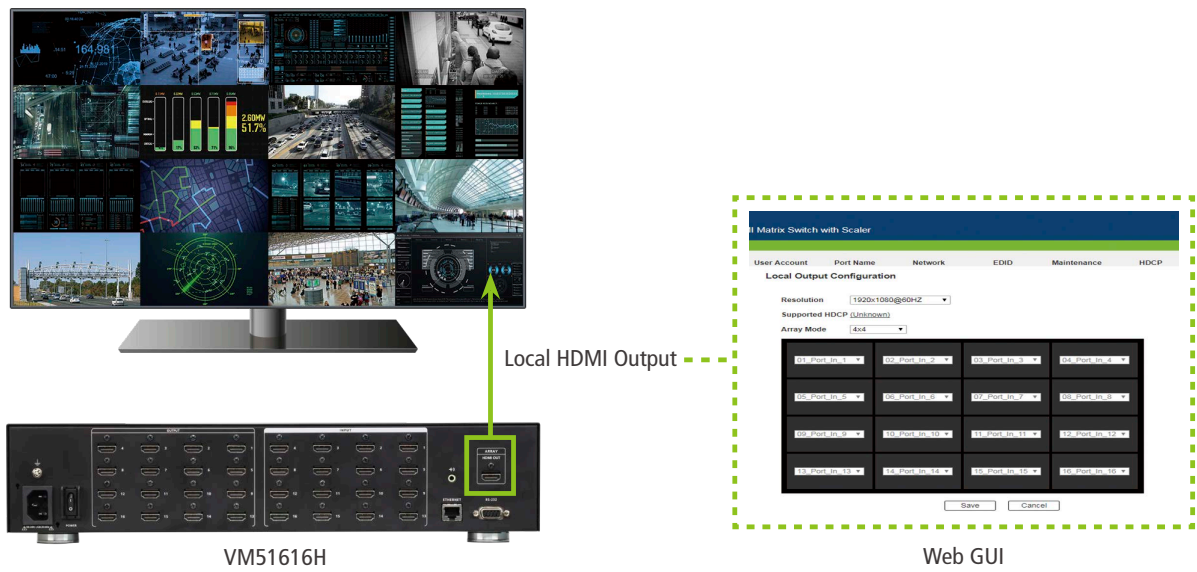
Extra Key Features

Audio De-embedding

Models with built-in audio extraction function are capable of de-embedding HDMI digital audio input into stereo audio output. This feature improves your installation efficiency by directly routing independent audio to audio processors, saving you time and setup costs.

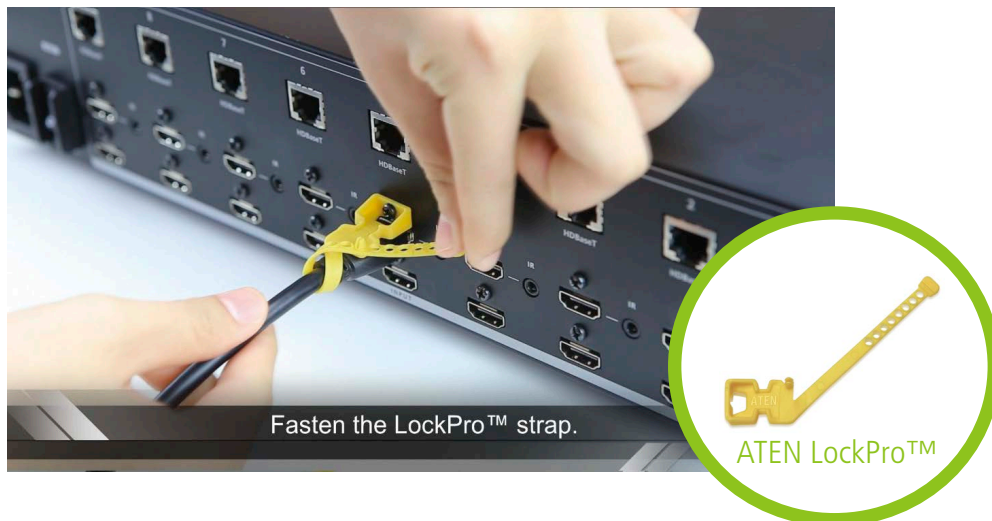
Local Preview

Models designed with local HDMI output enable real-time monitoring of multiple sources on a single display exactly where the device is located, such as in the server or control room. Select different Array Modes to simply view all the contents required in the installation.



ATEN LockPro™

Secure HDMI connections to ATEN Video by utilizing LockPro™, a patented ATEN accessory that prevents signal loss by ensuring a durable physical connection between your HDMI cables and devices in a simple, one-piece design.



Standard Series

4 x 4 / 8 x 8 True 4K HDMI Matrix Switch

VM0404HB / VM0808HB



reddot award 2015
winner interface design

- 4 x 4 or 8 x 8 HDMI inputs and outputs
- Supports up to 4096 x 2160 @60Hz (4:4:4)
- HDCP 2.2 compatible
- Features HDR for vivid video image performance



VM0404HB



VM0808HB



2 x 2 / 4 x 4 / 8 x 8 4K HDMI Matrix Switch

VM0202H / VM0404HA / VM0808HA

- 2 x 2 or 4 x 4 or 8 x 8 HDMI inputs and outputs
- Supports up to 4096 x 2160 @60Hz (4:2:0)
- HDCP 2.2 compatible (VM0808HA)



VM0202H



VM0404HA



VM0808HA



(VM0808HA)

2 x 2 / 4 x 4 VGA /Audio Matrix Switch

VS0202 / VM0404

- 2 x 2 or 4 x 4 VGA/Audio inputs and outputs
- Supports up to 1920 x 1200



VS0202



VM0404



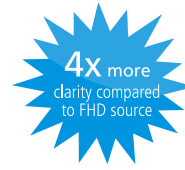
(VM0404)

(VM0404)

(VM0404)

4 x 4 / 8 x 9 4K HDMI Matrix Switch with Scaler

VM6404H / VM6809H



reddot award 2015
winner interface design

- 4 x 4 or 8 x 9 HDMI inputs and outputs
- Supports up to 4096 x 2160 @60Hz (4:2:0)
- HDCP 2.2 compatible
- FrameSync guarantees smooth video for high-motion elements and tear-free video walls
- Supports Seamless Switch™ and Video Wall functionality



VM6404H



VM6809H



4 x 4 / 8 x 8 HDMI Matrix Switch with Scaler

VM5404H / VM5808H



reddot award 2015
winner interface design

- 4 x 4 or 8 x 8 HDMI inputs and outputs
- Supports up to 1080p
- HDCP 1.4 compatible
- Supports Seamless Switch™ and Video Wall functionality



VM5404H



VM5808H



16 x 16 HDMI Matrix Switch with Scaler

VM51616H



reddot award 2015
winner interface design

- 16 x 16 HDMI inputs and outputs
- Supports up to 1080p
- HDCP 1.4 compatible
- FrameSync guarantees smooth video for high-motion elements and tear-free video walls
- Supports Seamless Switch™ and Video Wall functionality
- Audio-enabled; HDMI audio can be extracted to stereo audio
- Local HDMI output allows multiple preview of 16 sources



VM51616H



8 x 8 DVI Matrix Switch with Scaler

VM5808D



reddot award 2015
winner interface design

- 8 x 8 DVI inputs and outputs
- Supports up to 1920 x 1200
- HDCP 1.4 compatible
- Supports Seamless Switch™ and Video Wall functionality



VM5808D



4 x 4 / 9 x 9 HDMI HDBaseT-Lite Matrix Switch

VM3404H / VM3909H



reddot award 2015
winner interface design

- 4 / 9 HDMI inputs and HDBaseT outputs, with mirrored 4 / 9 HDMI and HDBaseT outputs
- Supports up to 4096 x 2160 @60Hz (4:2:0)
- HDCP 1.4 compatible
- HDBaseT Connectivity with Anti-Jamming support for high quality long distance video transmission
- Supports Seamless Switch™, Video Wall, FrameSync, POH with compatible ATEN receiver



VM3404H



VM3909H



Compatible Receivers

Model	Max. Distance	IR	4K	Seamless Switch™	Video Wall	POH	Dual View	FrameSync	Audio De-embedding
VE801R	70m*	N/A	•	N/A	N/A	N/A	N/A	N/A	N/A
VE802R	70m*	•	•	N/A	N/A	•	N/A	N/A	N/A
VE805R (with Scaler)	70m*	•	N/A	•	•	N/A	N/A	N/A	N/A
VE816R (with Scaler)	70m*	•	•	•	•	N/A	N/A	•	N/A
VE814AR	70m*	•	•	N/A	N/A	N/A	•	N/A	N/A
VE601R (DVI)	70m*	N/A	N/A	N/A	N/A	N/A	N/A	N/A	N/A
VE901R	70m*	N/A	•	N/A	N/A	N/A	N/A	N/A	N/A
VE2812R	100m*	•	•	N/A	N/A	N/A	N/A	N/A	•

* We strongly recommend that you use a Cat 6a cable or ATEN 2L-2910 Cat 6 cable for best product performance.

Comparison Table

Series	Standard				
Interface	HDMI			VGA	
Model	VM0404HB VM0808HB	VM0404HA VM0808HA	VM0202H	VM0404	VS0202
Inputs to Outputs	4 to 4 / 8 to 8	4 to 4 / 8 to 8	2 to 2	4 to 4	2 to 2
Max. Resolution	4K@60Hz (4:4:4)	4K@60Hz (4:2:0) 4K@30Hz (4:4:4)	4K@60Hz (4:2:0) 4K@30Hz (4:4:4)	1920 x 1440	1920 x 1200
HDR	•	N/A	N/A	N/A	N/A
HDCP	2.2	VM0404HA: 1.4 VM0808HA: 2.2	1.4	N/A	N/A
Audio	• (HDMI)	• (HDMI)	• (HDMI)	•	•
Seamless Swtich™	N/A	N/A	N/A	N/A	N/A
Scaler	N/A	N/A	N/A	N/A	N/A
Video Wall	N/A	N/A	N/A	N/A	N/A
Web GUI	•	• (VM0808HA)	N/A	N/A	N/A
RS-232 Control	•	•	•	•	N/A
IR Control	•	•	•	•	N/A
Ethernet Control	•	• (VM0808HA)	N/A	N/A	N/A

Series	Seamless					HDBaseT™
Interface	HDMI				DVI	HDBaseT™ / HDMI
Model	VM6404H	VM6809H	VM5404H VM5808H	VM51616H	VM5808D	VM3404H VM3909H
Inputs to Outputs	4 to 4	8 to 9	4 to 4 / 8 to 8	16 to 16	8 to 8	4 to 4 / 9 to 9
Max. Resolution	4K@60Hz (4:2:0) 4K@30Hz (4:4:4)	4K@60Hz (4:2:0) 4K@30Hz (4:4:4)	1080p	1080p	1920 x 1200	4K@60Hz (4:2:0) 4K@30Hz (4:4:4)
HDCP	2.2	2.2	1.4	1.4	1.4	1.4
Audio	• (HDMI)	• (HDMI, Stereo)	• (HDMI)	• (HDMI, Stereo)	N/A	• (HDMI)
Seamless Swtich™	•	•	•	•	•	•*
Scaler	•	•	•	•	•	•*
Video Wall	•	•	•	•	•	•*
FrameSync	•	•	N/A	•	N/A	•*
Audio De-embedding	N/A	•	N/A	•	N/A	•*
Web GUI	•	•	•	•	•	•*
RS-232 Control	•	•	•	•	•	•*
IR Control	•	N/A	•	N/A	•	• (VM3404H)
Ethernet Control	•	•	•	•	•	•*

* The availability of these features depends on the ATEN HDBaseT™ Receiver used.

Optional Accessories

Item	Images	Part No.	Length (m)	To PC / Source Interface	To Switch Interface
HDMI Cable		2L-7DA3H 2L-7DA6H 2L-7D01H 2L-7D02H 2L-7D02H-1 2L-7D03H 2L-7D05H 2L-7D10H 2L-7D15H 2L-7D20H	0.3 0.6 1 1.8 2 3 5 10 15 20	 HDMI Male	 HDMI Male
DVI Cable		2L-7D03DD 2L-7D05DD	3 5	 DVI-D Male (Dual Link)	 DVI-D Male (Dual Link)
		2L-7D02V	1.8	 DVI-D Male (Single Link)  Audio Plug	 DVI-D Male (Single Link)  Audio Plug
VGA Cable		2L-2402A 2L-2502A 2L-2503A 2L-2505A 2L-2510A 2L-2515A 2L-2520A	1.8 2 3 5 10 15 20	 HDB-15 Male  Audio Plug	 HDB-15 Female  Audio Plug
		2L-2401 2L-2403 2L-2406 2L-2410 2L-2420	1.8 3 6 10 20	 HDB-15 Male	 HDB-15 Female
HDBaseT Cat6 Cable		2L-2910 (Shielded)	305	 RJ-45	 RJ-45
True 4K HDMI 2.0 Active Optical Cable		VE7832 VE7833 VE7834 VE7835	15 30 60 100	 HDMI Male	 HDMI Male
ATEN LockPro™ HDMI Cable Lock		2X-EA12			

Note: For more cable accessories, please visit the ATEN Website for latest updates.



Meeting Room

Optoma, Taiwan

Optoma, a leading designer and manufacturer of projection and audio products, decided to renovate their main meeting room with a high-performance presentation and conferencing system.

Challenges

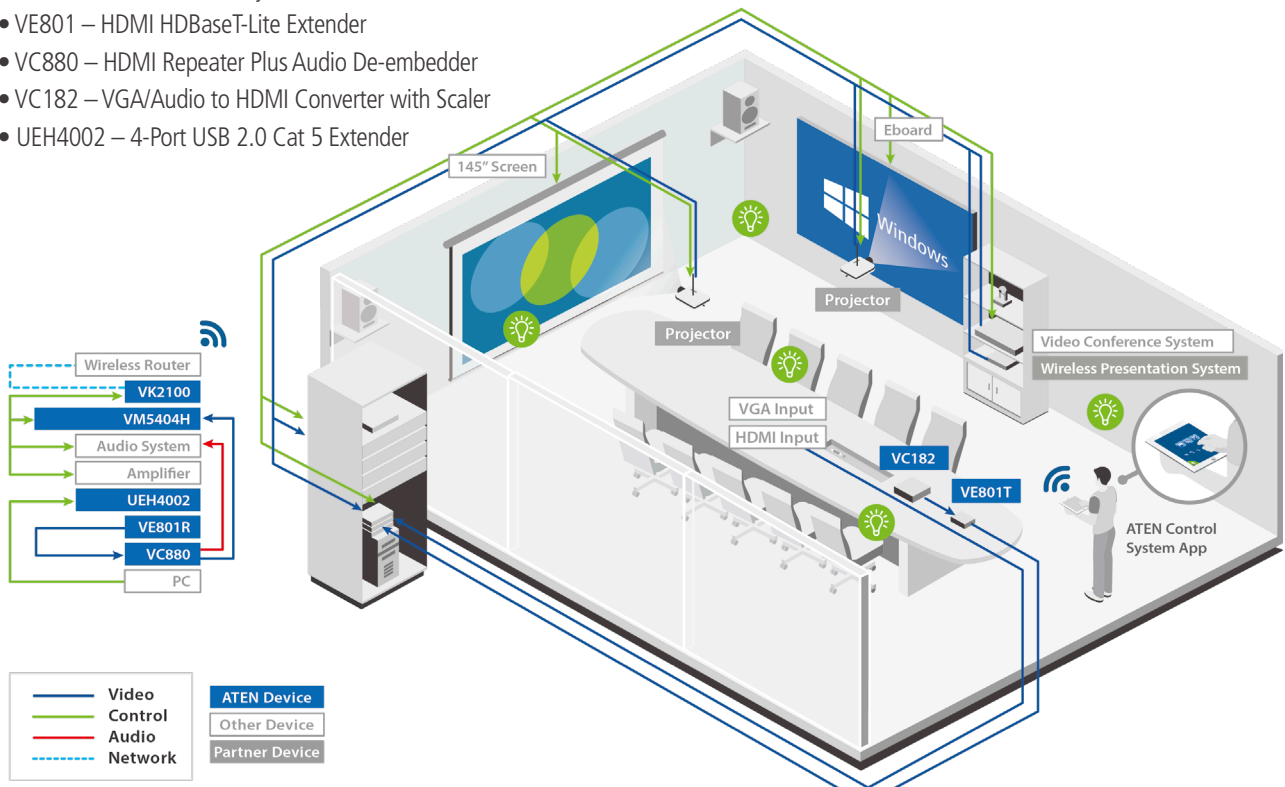
- A solution to cover all meeting room activities without the need for multiple remote controls
- Automated controls that can shift quickly among various lighting environments, source feeds from computers, and a variety of mix-and-match AV outputs
- Easily switch between video sources while splitting audio to a separate audio system
- Share presentations locally on multiple screens and remotely via video conferencing

ATEN Solution Benefits

- Simplifies control via IR function that can turn devices ON/OFF and lighting control to quickly adapt to each situation
- Allows flexible audio configuration through separation of audio from video sources
- Delivers easy and centralized wireless control from any mobile device through a fully customizable UI

Product List

- VM5404H – 4 x 4 HDMI Matrix Switch with Scaler
- VK2100 – ATEN Control System - Control Box
- VE801 – HDMI HDBaseT-Lite Extender
- VC880 – HDMI Repeater Plus Audio De-embedder
- VC182 – VGA/Audio to HDMI Converter with Scaler
- UEH4002 – 4-Port USB 2.0 Cat 5 Extender





4K Distribution Solution

3C Chain Store, India

One of the leading consumer electronics retail chain stores in India needed to deliver high-quality promotional information and announcements across shop floors to create an alluring shopping atmosphere.

Challenges

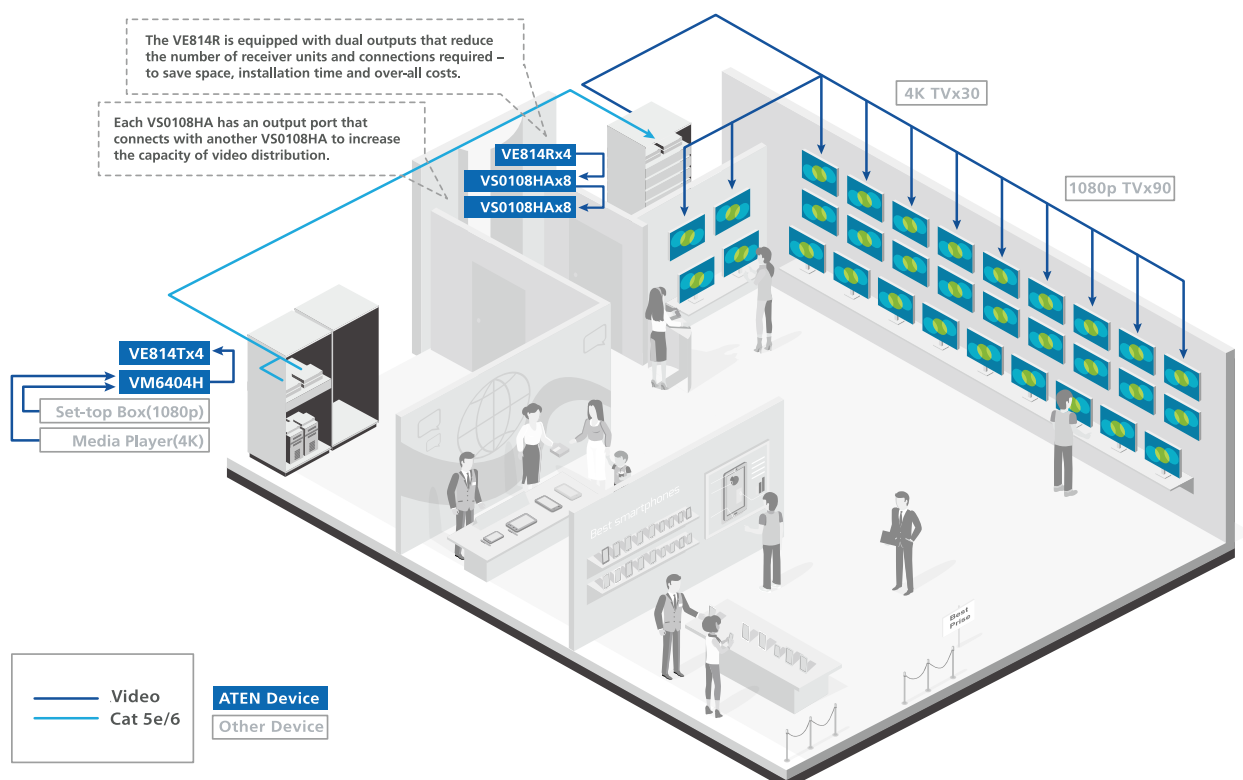
- A solution that is compatible with multiple displays of 4K and 1080p resolutions, various sizes, brands, and specifications
- Support a diverse array of source devices for playback, with the capability to play video through specific software and apps
- Transmit video content across an average distance of 50m between source and display, and support a dual 4K video output to displays located up to 100m away

ATEN Solution Benefits

- An HDCP-compliant solution that is compatible with multiple displays of various brands and specifications
- Allows easy up/downscale of 4K and 1080p content
- Provides dual 4K video output to receivers up to 100m away using a single cable

Product List

- VM6404H – 4 x 4 4K HDMI Matrix Switch with Scaler
- VE814 – HDMI HDBaseT Extender with Dual Output
- VS0108HA – 8-Port VGA/Audio Splitter





Video Wall

Taipei Main Station, Taiwan

A large train station in Taipei decided to build two large video walls to deliver transportation information to travelers and also advertisements from companies who want to get information to their target audience.

Challenges

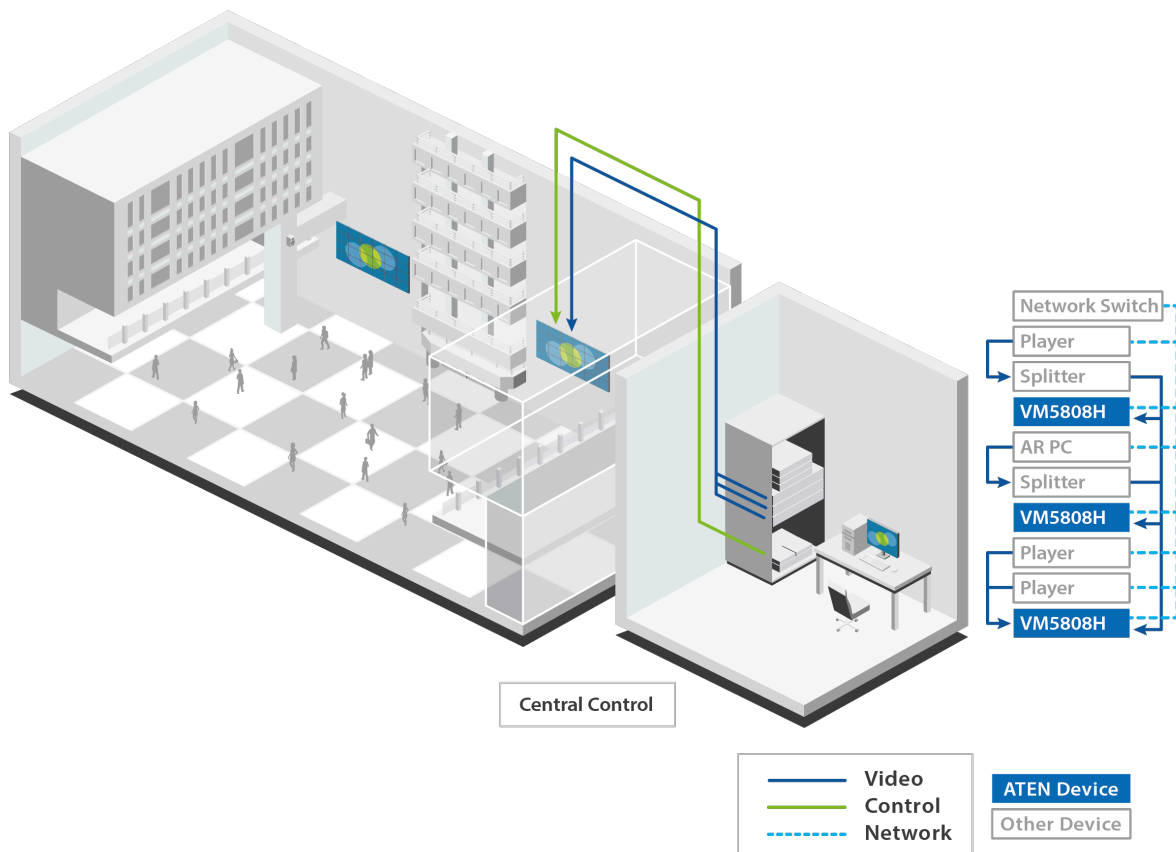
- Ability to display different content in different layouts seamlessly on two 6 x 4 video walls located on the first-floor hall
- Project content from three separate OTT BOX image sources
- Control the advertising system remotely via their own control system to change and schedule the advertising content displayed on the screens

ATEN Solution Benefits

- Integrates seamlessly with existing AV distribution architecture
- Provides continuous video streams, real-time control, and stable signal transmissions for customized video wall layouts

Product List

- VM5808H – 8 x 8 HDMI Matrix Switch with Scaler





Corporate Headquarters

ATEN International Co., Ltd.
3F., No.125, Sec. 2, Datung Rd., Sijhih District,
New Taipei City 221, Taiwan
Phone: +886-2-8692-6789 Fax: +886-2-8692-6767
<http://www.aten.com/global/en/>
E-mail: marketing@aten.com

America Region:

ATEN Technology Inc.
15365 Barranca Parkway, Irvine, CA 92618, U.S.A.
Phone: +1-949-428-1111 Fax: +1-949-428-1100
<http://www.aten.com/us/en/>
E-mail: sales@aten-usa.com

ATEN New Jersey Inc.
220 Davidson Avenue, Suite 404, Somerset,
NJ 08873, U.S.A.
Phone: +1-732-356-1703 Fax: +1-732-356-1639
<http://www.aten.com/us/en/>
E-mail: sales@aten-usa.com

EMEA Region:

ATEN Infotech N.V.
Mijnwerkerslaan 34, 3550 Heusden-Zolder, Belgium
Phone: +32-11-531543 Fax: +32-11-531544
<http://www.aten.com/eu/en/>
E-mail: sales@aten.be

ATEN U.K. Limited
466 Malton Avenue, Slough SL1 4QU, U. K.
Phone: +44-1753-539-121 Fax: +44-1753-215-253
<http://www.aten.com/gb/en/>
E-mail: sales@aten.co.uk

ATEN Poland Sp. z o. o.
2 Gottlieb Daimler Street 02-460 Warsaw, Poland
Phone: +48-514-120-220
<http://www.aten.com/pl/pl/>
E-mail: poland@aten.com

ATEN Romania S.R.L.
10 Bucuresti-Nord Road, Global City Business Park,
Building O 13, 6th floor, Voluntari, Ilfov County, Romania
<http://www.aten.com>
E-mail: romania@aten.com

ATEN Russia
Office 14212, No.14 Sereblyakova Proezd,
Moscow, Russia
Phone: +7-495-134-2808
<http://www.aten.com/ru/ru/>
E-mail: russia@aten.com

ATEN Info Iletisim Ltd.
Beştepe Mah.Yaşam Cad.,
Neorama Is Merkezi 13-A / 76
Yenimahalle Ankara, Turkey
Phone: +90-312-284-00-27
E-mail: turkey@aten.com

Oceania Region:

ATEN ANZ Pty Ltd.
Suite 3. 19, 32 Delhi Road, North Ryde,
NSW 2113, Australia
Phone: +61-2-9114-9933 Fax: +61-2-8072-3723
<http://www.aten.com/au/en/>
E-mail: sales@au.aten.com

Asia Pacific Region:

ATEN China Co., Ltd.
Beijing Headquarters
18/F, Tower A, Horizon International Tower, No.6,
Zhichun Road, Haidian District, Beijing, China 100088
Phone: +86-10-5225-0110 Fax: +86-10-8296-1318
<http://www.aten.com/cn/zh/>
E-mail: sales@aten.com.cn

Shanghai Branch
18E, Shanghai Industrial Investment Building, No. 18
Cao Xi Bei Road, Xuhui District,
Shanghai 200030, China
Phone: +86-21-3126-0110 Fax: +86-21-3126-0110-310
<http://www.aten.com/cn/zh/>
E-mail: sales@aten.com.cn

Guangzhou Branch
Room 3913, Ren-Feng Building, No. 490
Tian He Road, Tian He District, Guangzhou 510620, China
Phone: +86-20-3883-0110 Fax: +86-20-3835-0810
<http://www.aten.com/cn/zh/>
E-mail: sales@aten.com.cn

ATEN Japan Co., Ltd.
Tokyo Headquarters
ATEN Bldg. 8-4, Minami-senju 3-chome,
Arakawa-ku, Tokyo 116-0003, Japan
Phone: +81-3-5615-5810 Fax: +81-3-3891-3810
<http://www.aten.com/jp/ja/>
E-mail: sales@atenjapan.jp

Osaka Branch

Awajimachi Dai-Building 3F
3-1-9, Awajimachi, Chuo-ku, Osaka-shi, 541-0047, Japan
Phone: +81-6-6229-5810 Fax: +81-6-6229-8810
<http://www.aten.com/jp/ja/>
E-mail: sales@atenjapan.jp

ATEN Korea Co., Ltd.

B-303, 32, Digital-ro 9-gil,
Geumcheon-gu, Seoul 08512, Korea
Phone: +82-2-467-6789 Fax: +82-2-467-9876
<http://www.aten.com/kr/ko/>
E-mail: sales@aten.co.kr

Atech Peripherals, Inc.

6F, No.133, Sec. 2, Datung Rd., Sijhih District,
New Taipei City 221, Taiwan
Phone: +886-2-8692-6969 Fax: +886-2-8692-6926
<http://www.aten.com/tw/zh/>
E-mail: taiwan@aten.com

Atech Kaohsiung Office

Room D, 8F, No. 117, Zhongshan 1st Rd.
Xinxing District, Kaohsiung 800, Taiwan
Phone: +886-7-286-8188 Fax: +886-7-286-8199
<http://www.aten.com/tw/zh/>
E-mail: taiwan@aten.com

ATEN India Rep. Office

Unit 406, 4th Floor, Barton Center, M.G. Road,
Bangalore - 560001, India
Phone 1: +91-80-48517231
Phone 2: +91-9686151525
<http://www.aten.com>
E-mail: South-Asia@aten.com

About ATEN

ATEN International Co., Ltd., established in 1979, is the leading provider of IT connectivity and management solutions. Offering integrated KVM, Professional Audiovisual, and Intelligent Power solutions, ATEN products connect, manage, and optimize electronics in corporate, government, industrial, educational, and retail environments. ATEN has 500+ issued international patents and a global R&D team that produces a constant stream of innovative solutions, resulting in a comprehensive portfolio of products available worldwide.

