

PORT BLOCKERS

PROTECT. PREVENT. PRESERVE.

Physical first level security
solutions for IT & AV hardware
interfaces & systems.

“THERE ARE
ONLY TWO
TYPES
OF COMPANIES -
THOSE THAT
KNOW THEY’VE
BEEN
COMPROMISED
AND THOSE
THAT DON’T
KNOW.”

Dmitri Alperovitch, Cyber Security Expert
& Co-Founder of CrowdStrike

DATA SECURITY SOLUTIONS

THE BENEFITS OF PHYSICAL DATA PROTECTION

Data security solutions provide users with the tools to help prevent security compromises and deter unauthorised users from accessing ports that provide essential functionality to an application or store sensitive data that needs to remain confidential or secure.

There are a variety of ways to secure data digitally: like firewalls, anti-virus programs and bespoke security software, however physical blockers can be just as important in keeping data safe from compromise. Port blockers are visual deterrents that seamlessly fit into a variety of environments and provide a physical barrier to unauthorised access.

1 STRENGTHEN SECURITY

Port blockers serve as a great visual deterrent for threats to data. Plug these simple devices into a corresponding port and stop unauthorised users from inserting devices that could compromise security or data.

2 USER FRIENDLY

Quick and easy deployment allows multiple ports to be blocked and managed easily by system administrators. No training or software is required for installation and once installed the port blockers require virtually no maintenance.

3 EFFICIENT & SCALABLE

Low installation costs facilitate gradual deployment across an installation as budget allows. With virtually no maintenance costs and additional keys and locks available, these devices provide almost unlimited scalability.

4 SECURITY IN DEPTH

Combined with software solutions such as specialist programs and BIOS restrictions, port blockers provide an added layer of defence against data theft and compromises.

USB PORT BLOCKERS

TYPE C & TYPE A

USB Port Blockers are useful little devices that system administrators can use to physically prevent access to USB ports. USB Port Blockers allow locks to be inserted and removed from USB ports to stop unauthorised users from inserting pen drives, USB mass storage and mobile devices into shared workstations or devices with USB ports in public spaces.

QUICK GUIDE

FOR USING USB PORT BLOCKERS



01 A lock is attached to the key and inserted into a USB port.



02 The sliding mechanism on the key is then released leaving the lock in place.



03 To remove the lock the key is inserted into the lock and pulled back, simple!

APPLICATION EXAMPLES
FOR COMPATIBLE DEVICES
WITH USB C & USB A PORTS

- ▼ Protect laptops from unauthorised access in workplaces.



- ▼ Block ports on office PCs to help label unused ports or deny access.



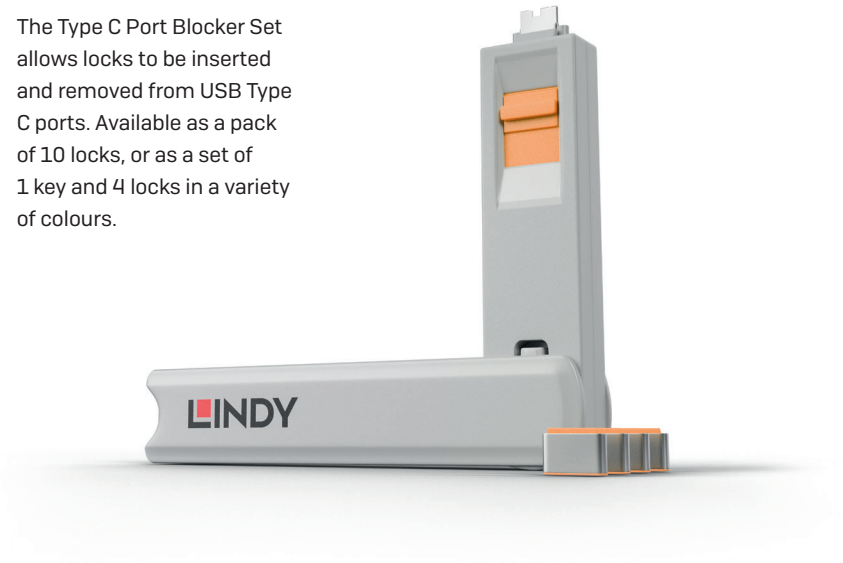
- ▲ Block access to USB ports on professional AV and IT systems, e.g. servers, matrices and switches.



- ▲ Prevent tablets that are left in public environments, e.g. points of sales and classrooms, from being plugged in by unauthorised third parties.

USB TYPE C

The Type C Port Blocker Set allows locks to be inserted and removed from USB Type C ports. Available as a pack of 10 locks, or as a set of 1 key and 4 locks in a variety of colours.



PACK OF 4 LOCKS WITH 1 KEY
AVAILABLE IN SETS OF PINK, GREEN, WHITE, ORANGE, BLUE



No. 40425

No. 40426

No. 40427

No. 40428

No. 40465

PACK OF 10 LOCKS WITHOUT KEY
AVAILABLE IN PINK, GREEN, WHITE, ORANGE, BLUE



No. 40437

No. 40438

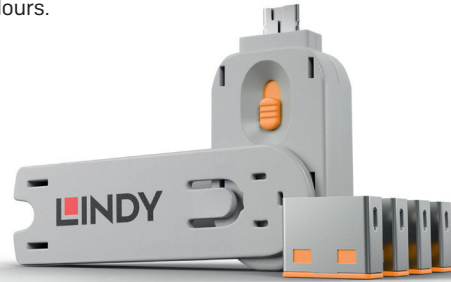
No. 40439

No. 40440

No. 40466

USB TYPE A

The Type A Port Blocker Set allows locks to be inserted and removed from USB Type A ports. Available as a single key, a pack of 10 locks, or as a set of 1 key and 4 locks in a variety of colours.



PACK OF 4 LOCKS WITH 1 KEY
AVAILABLE IN SETS OF PINK,
GREEN, BLUE, ORANGE, WHITE



No. 40450

No. 40451

No. 40452

No. 40453

No. 40454

PACK OF 10 LOCKS WITHOUT KEY
AVAILABLE IN PINK, GREEN,
BLUE, ORANGE, WHITE



No. 40460

No. 40461

No. 40462

No. 40463

No. 40464

KEY WITHOUT LOCKS
AVAILABLE IN PINK,
GREEN, BLUE, ORANGE, WHITE



No. 40620

No. 40621

No. 40622

No. 40623

No. 40624

RJ-45 PORT BLOCKER

RJ-45 Port Blockers can be used to easily block open network ports and prevent users from connecting cables, devices or inserting foreign objects without permission. RJ-45 ports are ubiquitous in networked environments, by blocking these ports there is a first line of network security against viruses and other compromises. RJ-45 ports can also act as a visual cue, showing inactive or disconnected ports.



PACK OF 10 LOCKS WITH KEY
AVAILABLE IN SETS OF BLACK,
GREEN, ORANGE, YELLOW



No. 40470



No. 40472



No. 40480



No. 40482

PACK OF 20 LOCKS WITHOUT KEY
AVAILABLE IN BLACK, GREEN,
ORANGE, YELLOW



No. 40471



No. 40473



No. 40481



No. 40483

KEY WITHOUT LOCKS
AVAILABLE IN BLACK,
GREEN, ORANGE, YELLOW



No. 40630



No. 40631

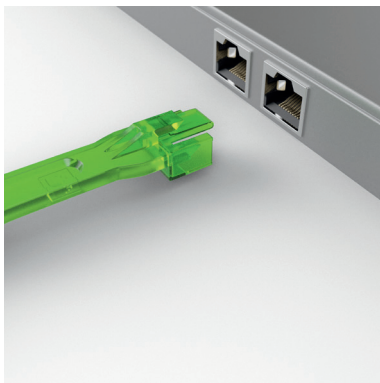


No. 40632

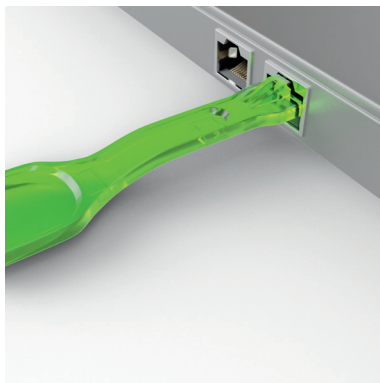


No. 40633

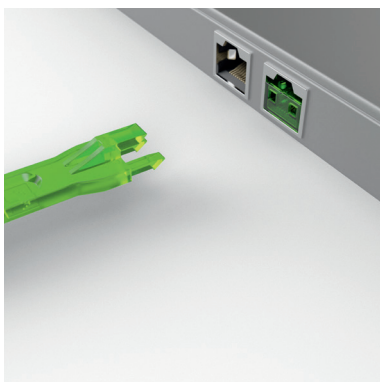
QUICK GUIDE FOR USING RJ-45 PORT BLOCKERS



01 A lock is attached to the key and inserted into a RJ-45 port.



02 The sliding mechanism on the key is then released leaving the lock in place.



03 To remove the lock the key is inserted into the lock and pulled back, simple!

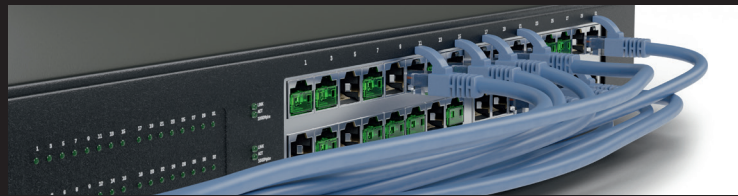
APPLICATION EXAMPLES FOR COMPATIBLE DEVICES WITH RJ-45 PORTS



Denies user access to Ethernet ports on desktop PCs in workplaces and schools.



Deter users from using Ethernet outlet ports in corporate buildings.



Mark RJ-45 ports on network switches to show deactivated or inactive ports.



Restrict access or mark unused ports in a server room that contains a LAN.

SD PORT BLOCKER

SD Port Blockers can be inserted into SD card ports on memory readers, in cameras, and other devices. These devices provide a visual deterrent to anyone looking to copy data or viruses from, or to, an SD card. SD Port Blockers are available as a set of 1 key and 4 locks, or a pack of 10 additional locks.



PACK OF 4 LOCKS WITH KEY

AVAILABLE IN GREY



No. 40478

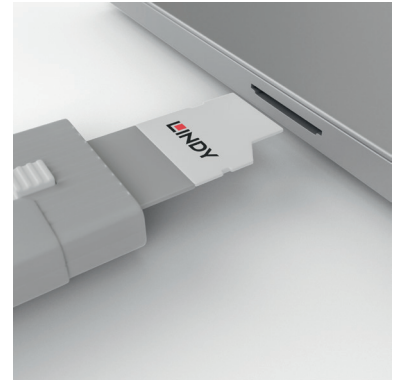
PACK OF 10 LOCKS WITHOUT KEY

AVAILABLE IN GREY

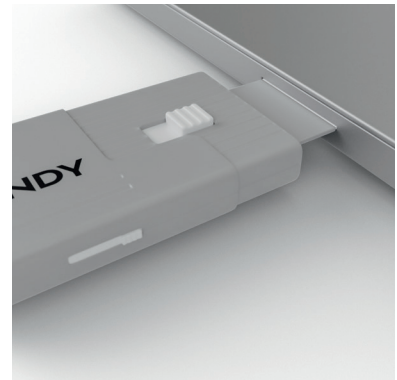


No. 40479

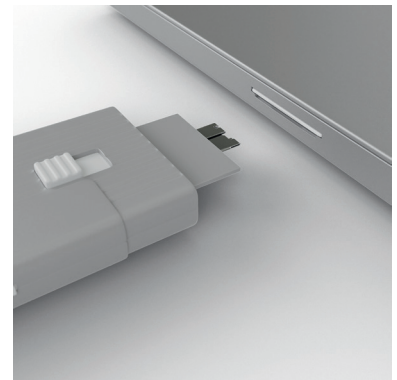
QUICK GUIDE FOR USING SD PORT BLOCKERS



01 A lock is attached to the key and inserted into a SD port.



02 The sliding mechanism on the key is then released leaving the lock in place.



03 To remove the lock the key is inserted into the lock and pulled back, simple!

APPLICATION EXAMPLES
FOR COMPATIBLE DEVICES
WITH SD PORTS



Block access to a desktop PC with SD port, stopping users from copying sensitive data or introducing viruses.

◀ Restrict access to memory ports on cameras to stop users from copying data or introducing new data on to a device.

Worldwide Offices**Germany**

LINDY-Elektronik GmbH
Mannheim
T: +49 621 470050
info@lindy.de

United Kingdom

LINDY Electronics Ltd.
Stockton-on-Tees
T: +44 1642 754000
postmaster@lindy.co.uk

International

LINDY International Ltd.
Stockton-on-Tees
T: +44 1642 754020
postmaster@lindy.com

Italy

LINDY Italia S.r.l.
Olgiate Olona (VA)
T: +39 0331 1601711
info@lindy.it

France

LINDY France
Mundolsheim
T: +33 388 200466
france@lindy.fr

Portugal

Lidertrónica, Lda
Lisboa
T: +35 121 8161050
lider@lidertronica.com

South-Africa

Linkqage
Cape Town
T: +27 2151 44800
support@linkqage.co.za

Australia

LINDY Australia Pty Ltd
Brisbane
T: +61 7326 29033
info@lindy.com.au

Hong Kong

LINDY China Ltd.
Hong Kong
T: +852 9098 9920
info@lindy.com

China

LINDY Electronics Ltd.
Ningbo, Zhejiang
T: +86 5748 6995613
info@lindy-china.cn

Taiwan

LINDY Asia Inc.
Taipei
T: +88 6286 981141
sales@lindy.com.tw

Indonesia

PT. LINDY Teknik Indonesia
Jakarta
T: +62 21 45876206
info@lindy-indonesia.id

Japan

LINDY Sales Inc.
Tokyo
T: +81 3627 29860
support@lindy.co.jp

Lindy and the Lindy logotype are registered trademarks of the Lindy Group in the UK and other countries. All other trademarks are property of their respective owners. Subject to technical modifications and other changes. The contents of this brochure have been prepared with great care. No warranty or liability is accepted for the correctness, completeness, or accuracy of the information. This brochure does not constitute a contractual offer and is solely for the purpose of providing (non-binding) information. © Lindy Group