

Keystone system

universal

compatible

individually configurable



Content

Keystone system	3
Advantages of the Keystone System	3
Standardization and assembly	4
Connection overview	5
Network	8
SAT/antenna	12
HDMI	13
Optical Fiber	14
RCA	15
Speakers	15
USB	16
Assembly	17
Panel	19

Keystone system

With the Keystone system there are no limits to the installation.

In more and more areas of signal transmission, you have to be creative these days and constantly develop individual solutions to construct connections. The home entertainment sector is always creating new possibilities and continues to evolve. The plug connections must therefore also adapt.

The keystone system has a special advantage here: The individual plug connections can be individually adapted to each other and vary the number of individual plugs without any problems.



Simple

laborious soldering and a complex assembly of cable systems now have an end



Quick

a fast and simple solution for all connection requirements



Diverse

individual and diverse plug options for already fixed cables and cable endpoints

Advantages of the Keystone System

Simple assembly

Thanks to snap-in assembly, no previous technical knowledge or laborious soldering is required. One screwdriver alone is enough to mount the keystone system.

Movable despite bracket

Even in the various keystone holders, the snap-in system allows the plugs to be extended by up to 180 degrees. With flat housings, it is therefore possible to use the cable without any problems, even without bending the plug.

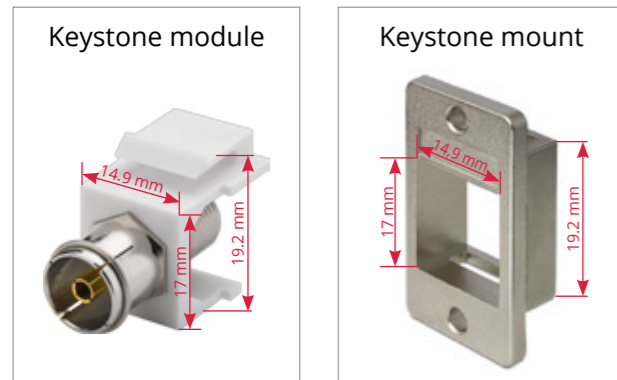
Exceptional diversity

Thanks to the individual possibilities, the plug connections of the keynotes can be easily removed from each other even after assembly and exchanged with other plugs at any time.



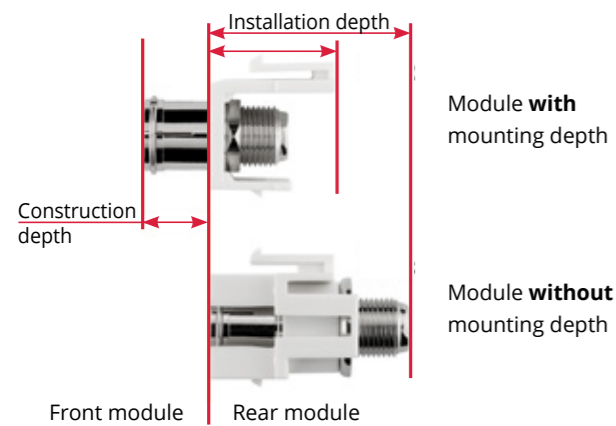
Standardization and assembly

Standardized dimensions

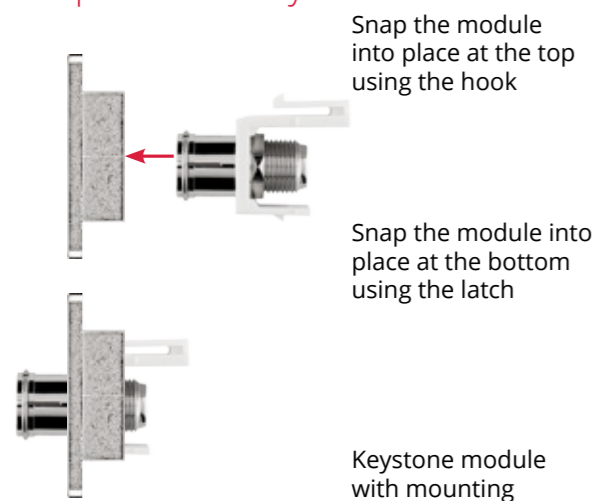


Depth of construction

When installing the various modules, attention to the different mounting and installation depths is needed.

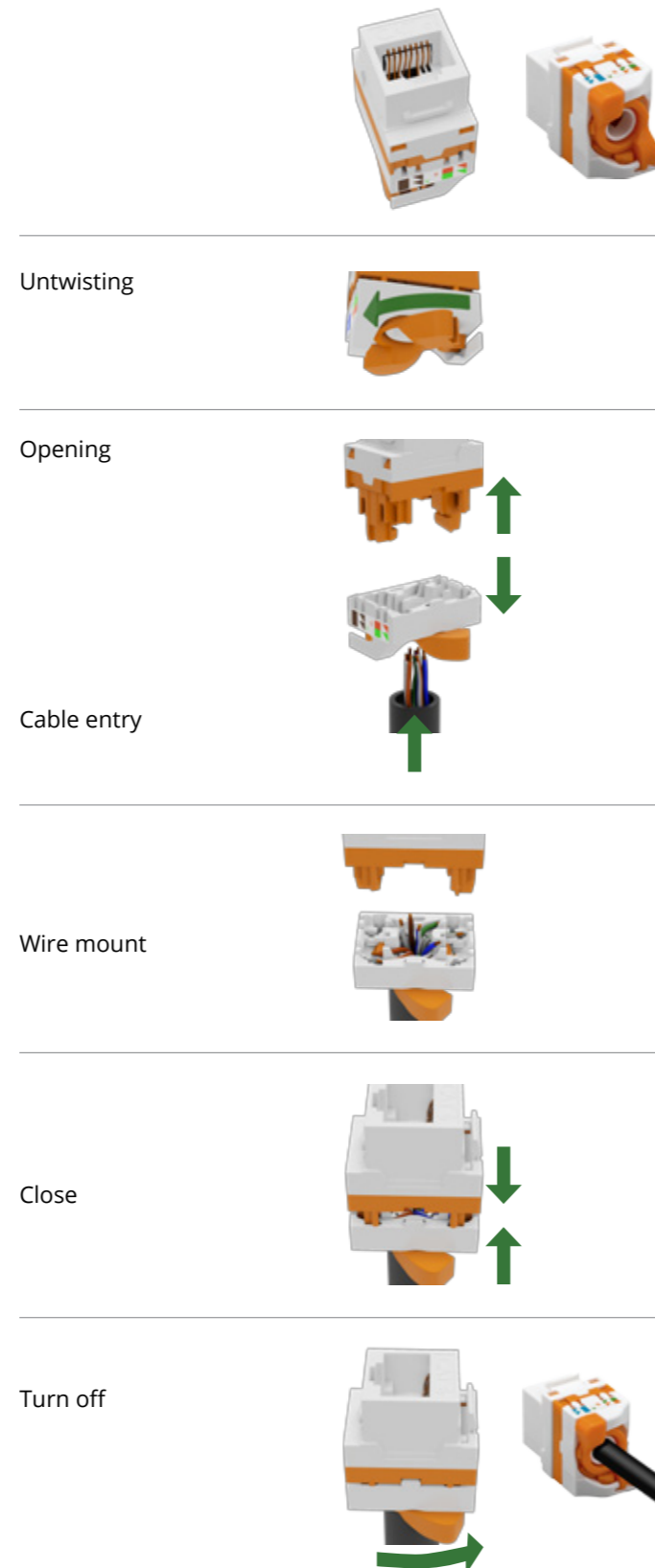


Snap-in assembly



Tool-free cable assembly






Cable fixation by twisting (93826, 93827)




NETWORK

Illustration	No.	Description	Connection 1	Connection 2	Width
	95738	Keystone module RJ45 CAT 5e, UTP	RJ45 female (8P8C)	for IDC connectors (toolless)	20 mm
	95739	Keystone module RJ45 CAT 5e, UTP	RJ45 female (8P8C)	for IDC connectors (toolless)	18.11 mm
	51444	Keystone module CAT 5e, STP, slim type	2x RJ45 female (8P8C)		15.95 mm
	95740	Keystone module RJ45 CAT 6, UTP	RJ45 female (8P8C)	for IDC connectors (toolless)	16.7 mm
	95901	Keystone module RJ45 CAT 6, STP	RJ45 female (8P8C)	for IDC connectors (toolless)	17.2 mm
	95742	Keystone module RJ45 CAT 6, UTP	RJ45 female (8P8C)	for IDC connectors (toolless)	16.2 mm
	90863	Keystone module RJ45 CAT 6, STP	RJ45 female (8P8C)	for IDC connectors (toolless)	17.5 mm
	93826	Keystone module RJ45 CAT 6, UTP	RJ45 female (8P8C)	for IDC connectors (toolless)	16.6 mm
	96100	Keystone module CAT 6, STP, slim type	2x RJ45 female (8P8C)		15.9 mm
	90692	Keystone module RJ45 CAT 6A, UTP, black	RJ45 female (8P8C)	for IDC connectors (toolless)	17.1 mm
	90688	Keystone module RJ45 CAT 6A, UTP, blue	RJ45 female (8P8C)	for IDC connectors (toolless)	17.1 mm
	90687	Keystone module RJ45 CAT 6A, UTP, green	RJ45 female (8P8C)	for IDC connectors (toolless)	17.1 mm
	90693	Keystone module RJ45 CAT 6A, UTP, light gray	RJ45 female (8P8C)	for IDC connectors (toolless)	17.1 mm
	90690	Keystone module RJ45 CAT 6A, UTP, orange	RJ45 female (8P8C)	for IDC connectors (toolless)	17.1 mm
	90689	Keystone module RJ45 CAT 6A, UTP, red	RJ45 female (8P8C)	for IDC connectors (toolless)	17.1 mm
	90867	Keystone module RJ45 CAT 6A, UTP, white	RJ45 female (8P8C)	for IDC connectors (toolless)	17.1 mm
	90691	Keystone module RJ45 CAT 6A, UTP, yellow	RJ45 female (8P8C)	for IDC connectors (toolless)	17.1 mm
	93827	Keystone module RJ45 CAT 6A, UTP	RJ45 female (8P8C)	for IDC connectors (toolless)	16.7 mm
	79448	Keystone module RJ45 CAT 6A, STP, slim-line	RJ45 female (8P8C)	for IDC connectors (toolless)	14.8 mm
	66460	Keystone RJ45 module CAT 6A, STP, with shutter, black	RJ45 female (8P8C)	for IDC connectors (toolless)	15.8 mm
	66461	Keystone RJ45 module CAT 6A, STP, with shutter, blue	RJ45 female (8P8C)	for IDC connectors (toolless)	15.8 mm
	66462	Keystone RJ45 module CAT 6A, STP, with shutter, red	RJ45 female (8P8C)	for IDC connectors (toolless)	15.8 mm
	66463	Keystone RJ45 module CAT 6A, STP, with shutter, silver	RJ45 female (8P8C)	for IDC connectors (toolless)	15.8 mm
	90864	Keystone module RJ45 CAT 6A, STP, slim-line	RJ45 female (8P8C)	for IDC connectors (toolless)	16.3 mm
	95900	Keystone module RJ45 CAT 6A, STP	RJ45 female (8P8C)	for IDC connectors (toolless)	17.3 mm
	90866	Keystone module RJ45 CAT 6A, STP	2x RJ45 female (8P8C)		17.6 mm




SAT/ANTENNA

Illustration	No.	Description	Connection 1	Connection 2	Width
	79474	Keystone Module SAT/antenna	F female	F female	0 mm
	79936	Keystone Module SAT/antenna	Coaxial female	F female	16.2 mm
	79933	Keystone Module SAT/antenna, flush mount	Coaxial female	F female	18.9 mm
	79955	Keystone Module SAT/antenna	Coaxial male	F female	16.2 mm
	79938	Keystone Module SAT/antenna, flush mount	Coaxial male	F female	18.9 mm







HDMI

Illustration	No.	Description	Connection 1	Connection 2	Width
	90856	HDMI™ Keystone module with 2x HDMI™ females	2x HDMI™ females		17.18 mm

OPTICAL FIBER

Illustration	No.	Description	Connection 1	Connection 2	Width
	80000	KeyStone fibre optic cable module	2 LC-Duplex female		17.2 mm
	80017	KeyStone fibre optic cable module	2 SC-Simplex female		17 mm
	80003	KeyStone fibre optic cable module	2 ST-Simplex female		17.2 mm





RCA

Illustration	No.	Description	Connection 1	Connection 2	Width
	79669	Keystone Cinch/RCA module. red	2 RCA female		14.7 mm
	79676	Keystone Cinch/RCA module. white	2 RCA female		16.2 mm
	79672	Keystone Cinch/RCA module. yellow	2 RCA female		16.2 mm
	79702	Keystone Cinch/RCA module. red	RCA female	F female	14.7 mm
	79727	Keystone Cinch/RCA module. white	RCA female	F female	16.2 mm
	79799	Keystone Cinch/RCA module. yellow	RCA female	F female	16.2 mm

SPEAKERS

Illustration	No.	Description	Connection 1	Connection 2	Width
	79476	Keystone module speaker. black	Banana female		16.2 mm
	79484	Keystone module speaker. red	Banana female		16.2 mm



USB

Illustration	No.	Description	Connection 1	Connection 2	Width
	79930	KeyStone USB module. can be installed on both sides	USB 2.0 female (type A)	USB 2.0 female (type B)	16.9 mm
	79909	KeyStone USB module	2 USB 2.0 female (type A)		17.2 mm
	79925	KeyStone USB module	2 USB 2.0 female (type B)		16.8 mm
	79927	KeyStone USB module	2 USB 3.0 female (type A)		18.3 mm

ASSEMBLY

Illustration	No.	Description	Connection 1	Connection 2	Width
	79990	Keystone cover (pack of 4), black			
	79816	Keystone cover (pack of 4), white			
	93825	Keystone Frame, designable			
	95902	Faceplate to mount keystone jacks			
	95903	Faceplate to mount keystone jacks			
	96502	Keystone on-wall mounting frame			
	79883	Keystone holder/bezel for device installation			
	79355	Keystone empty housing 1 port			
	79366	Keystone empty housing 2 port			
	79376	Keystone empty housing 4 port			
	79379	Keystone empty housing 6 port			
	79426	Keystone empty housing 8 port			

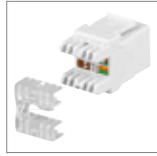
PANEL

Illustration	No.	Description	Connection 1	Connection 2	Width
	95743	19 inch (48.3 cm) Keystone blank Patch Panel (1 HE)			
	95336	19 inch (48.3 cm) Keystone Patch Panel (1 HE)			



Goobay
Keystone module RJ45 CAT 5e, UTP, 100 MHz
20 mm width, for IDC connectors (toolless)

- can be mounted in Keystone panels up to 24 ports or wall outlets
- connectors have TIA 568A/B colour code
- suitable for PoE+ according to IEEE 802.3at



95738 Bulk



Goobay
Keystone module RJ45 CAT 5e, UTP, 100 MHz
18.11 mm width, for IDC connectors (toolless), SNAP-IN

- can be mounted in Keystone panels up to 24 ports or wall outlets
- connectors have TIA 568A/B colour code
- mounting form: 14.7 mm
- suitable for PoE+ according to IEEE 802.3at



95739 Bulk



Goobay
Keystone module CAT 5e, STP, slim type
15.95 mm width, 2 RJ45 female (8P8C)

- for easy snap-in mounting in e. g. a Keystone patchpanel, face plate or surface-mount box
- modular coupler to link two network cable
- for Keystone ports with 19.2 x 14.9 mm
- pin out 1:1
- metal housing
- suitable for PoE+ according to IEEE 802.3at



51444 Bulk

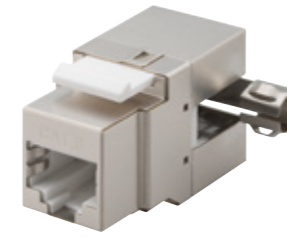


Goobay
Keystone module RJ45 CAT 6, UTP, 250 MHz
16.7 mm width, for IDC connectors (toolless)

- can be mounted in Keystone panels up to 24 ports or wall outlets
- connectors have TIA 568A/B colour code
- suitable for PoE+ according to IEEE 802.3at



95740 Bulk



Goobay
Keystone module RJ45 CAT 6, STP, 250 MHz
17.2 mm width, for IDC connectors (toolless), 90° angled output

- can be mounted in Keystone panels up to 24 ports or wall outlets
- connectors have TIA 568A/B colour code
- metal housing
- suitable for PoE+ according to IEEE 802.3at



95901 Bulk



Goobay
Keystone module RJ45 CAT 6, UTP, 250 MHz
16.2 mm width, for IDC connectors (toolless), SNAP-IN

- can be mounted in Keystone panels up to 24 ports or wall outlets
- connectors have TIA 568A/B colour code
- mounting form: 16.7 mm



95742 Bulk



Goobay
Keystone module RJ45 CAT 6, STP, 250 MHz
17.3 mm width, for IDC connectors (toolless), SNAP-IN

- connectors have TIA 568A/B colour code
- can be mounted in Keystone panels up to 24 ports or wall outlets
- mounting form: 17.3 mm
- supports 10 gigabit ethernet application
- suitable for Power over Ethernet (PoE) according to IEEE 802.3 af
- strain-relief by cable tie
- zinc-alloy housing



90863 Bulk



Goobay
Keystone module RJ45 CAT 6, UTP, 250 MHz
16.6 mm width, for IDC connectors (toolless), with rotating button

- can be mounted in Keystone panels up to 24 ports or wall outlets
- suitable for round cable AWG 22-24, max. cable diameter: 7.5 mm
- connectors have TIA 568A/B colour code
- suitable for Power over Ethernet (PoE) according to IEEE 802.3 af



93826 Bulk





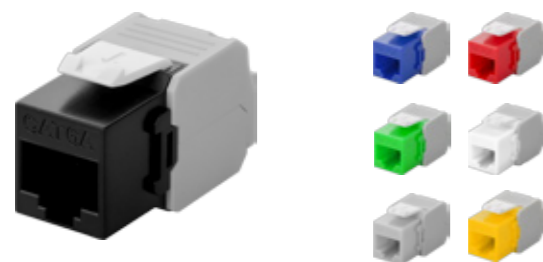
Goobay
Keystone module CAT 6, STP, slim type

15.9 mm width, 2 RJ45 female (8P8C)

- for easy snap-in mounting in e. g. a Keystone patchpanel, face plate or surface-mount box
- modular coupler to link two network cable
- for Keystone ports with 19.2 x 14.9 mm
- pin out 1:1
- metal housing
- suitable for PoE+ according to IEEE 802.3at



96100 Bulk



Goobay
Keystone module RJ45 CAT 6A, UTP

17.1 mm width, crocodile type, for IDC connectors (toolless)

- can be mounted in Keystone panels or wall outlets
- connectors have TIA 568A/B colour code
- plastic housing



black	90692	Bulk	red	90689	Bulk
blue	90688	Bulk	white	90867	Bulk
green	90687	Bulk	yellow	90691	Bulk
light gray	90693	Bulk	orange	90690	Bulk



Goobay
Keystone RJ45 module CAT 6A, STP, with shutter

15.8 mm width, crocodile type, for IDC connectors (toolless)

- can be mounted in Keystone panels up to 24 ports or wall outlets
- connectors have TIA 568A/B colour code
- supports 10 gigabit ethernet application
- with practical dust cover – various colours for structured cabling
- strain-relief by cable tie
- fully shielded zinc-alloy housing



black	66460	Bulk	red	66462	Bulk
blue	66461	Bulk	silver	66463	Bulk



Goobay
Keystone module RJ45 CAT 6A, STP, 500 MHz, slim-line

16.3 mm width, crocodile type, for IDC connectors (toolless)

- can be mounted in Keystone panels up to 24 ports or wall outlets
- connectors have TIA 568A/B colour code
- mounting form: 16.3 mm
- supports 10 gigabit ethernet application
- suitable for Power over Ethernet (PoE) according to IEEE 802.3 af
- strain-relief by cable tie
- zinc-alloy housing



90864 Bulk



Goobay
Keystone module RJ45 CAT 6A, UTP

16.7 mm width, for IDC connectors (toolless), with rotating button

- can be mounted in Keystone panels up to 24 ports or wall outlets
- suitable for round cable AWG 22-24, max. cable diameter: 7.5 mm
- connectors have TIA 568A/B colour code
- suitable for Power over Ethernet (PoE) according to IEEE 802.3 af



93827 Bulk



Goobay
Keystone module RJ45 CAT 6A, STP

17.3 mm width, butterfly type, for IDC connectors (toolless)

- can be mounted in Keystone panels up to 24 ports or wall outlets
- connectors have TIA 568A/B colour code
- mounting form: 17.3 mm
- supports 10 gigabit ethernet application
- suitable for Power over Ethernet (PoE) according to IEEE 802.3 af
- strain-relief by cable tie
- zinc-alloy housing



95900 Bulk



Goobay
Keystone module RJ45 CAT 6A, STP, slim-line

14.8 mm width, crocodile type, for IDC connectors (toolless)

- can be mounted in Keystone panels up to 24 ports or wall outlets
- connectors have TIA 568A/B colour code
- supports 10 gigabit ethernet application
- suitable for Power over Ethernet (PoE) according to IEEE 802.3 af
- strain-relief by cable tie
- fully shielded zinc-alloy housing



79448 Bulk



Goobay
Keystone module RJ45 CAT 6A, STP

17.6 mm width, crocodile type, 2 RJ45 female (8P8C)

- for easy snap-in mounting in e. g. a Keystone patchpanel, face plate or surface-mount box
- modular coupler to link two network cable
- metal housing



90866 Bulk





Goobay
Keystone Module SAT/antenna

16.2 mm width, F female > F female

- for installation in the KeyStone patch panels, wall sockets, housing and so on
- plastic housing



79474 Bulk



Goobay
Keystone Module SAT/antenna

16.2 mm width, Coaxial female > F female

- for installation in the KeyStone patch panels, wall sockets, housing and so on
- plastic housing



79936 Bulk



Goobay
Keystone Module SAT/antenna, flush mount

18.9 mm width, Coaxial female > F female

- for installation in the KeyStone patch panels, wall sockets, housing and so on
- plastic housing
- for flush installation in panel or housings



79933 Bulk



Goobay
Keystone Module SAT/antenna

16.2 mm width, Coaxial male > F female

- for installation in the KeyStone patch panels, wall sockets, housing and so on
- plastic housing



79955 Bulk



Goobay
Keystone Module SAT/antenna, flush mount

18.9 mm width, Coaxial male > F female

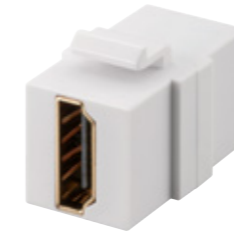
- for installation in the KeyStone patch panels, wall sockets, housing and so on
- plastic housing
- for flush installation in panel or housings



79938 Bulk



HDMI



Goobay
HDMI™ Keystone module with 2x HDMI™ females
for connection of pre-installed HDMI™ cables

- can be mounted in Keystone panels up to 24 ports or wall outlets



90856 Bulk





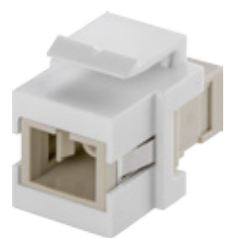
Goobay
KeyStone fibre optic cable module

17.2 mm width, 2 LC-Duplex female

- for installation in the KeyStone patch panels, sockets, housing and so on
- for multimode fibres
- plastic housing



80000 Bulk



Goobay
KeyStone fibre optic cable module

17 mm width, 2 SC-Simplex female

- for installation in the KeyStone patch panels, sockets, housing and so on
- for multimode fibres
- plastic housing



80017 Bulk



Goobay
KeyStone fibre optic cable module

17.2 mm width, 2 ST-Simplex female

- for installation in the KeyStone patch panels, sockets, housing and so on
- for multimode fibres
- plastic housing



80003 Bulk



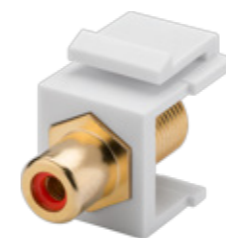
Goobay
Keystone Cinch/RCA module

14.7 mm width, 2 RCA female, gold-plated

- for installation in the KeyStone patch panels, sockets, housing and so on
- plastic housing



red	79669	Bulk
white	79676	Bulk
yellow	79672	Bulk



Goobay
Keystone Cinch/RCA module

14.7 mm width, RCA female > F female; gold-plated

- for installation in the KeyStone patch panels, sockets, housing and so on
- plastic housing



red	79702	Bulk
white	79727	Bulk
yellow	79799	Bulk



SPEAKERS



Goobay
Keystone module speaker

16.2 mm width, Pole terminal > insert nut

- for installation in the KeyStone patch panels, sockets, housing and so on
- gold plated
- plastic housing



black	79476	Bulk
red	79484	Bulk





Goobay
KeyStone USB module, can be installed on both sides
 16.9 mm width, USB 2.0 female (type A)

- for installation in the KeyStone patch panels, sockets, housing and so on
- plastic housing



79930 Bulk



Goobay
KeyStone USB module
 17.2 mm width, 2 USB 2.0 female (Type A)

- for installation in the KeyStone patch panels, sockets, housing and so on
- plastic housing



79909 Bulk



Goobay
Keystone USB module
 16.8 mm width, 2 USB 2.0 female (Type B)

- for installation in the KeyStone patch panels, sockets, housing and so on
- plastic housing



79925 Bulk

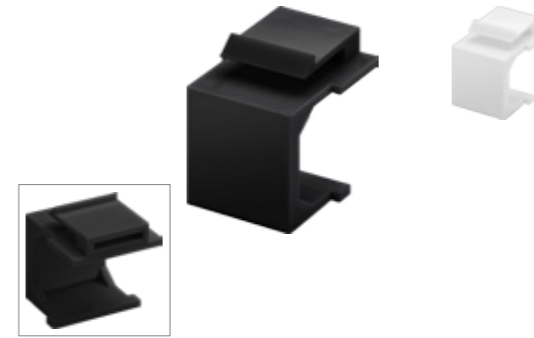


Goobay
KeyStone USB module
 18.3 mm width, 2 USB 3.0 female (Type A)

- for installation in the KeyStone patch panels, sockets, housing and so on
- plastic housing



79927 Bulk



Goobay
Keystone cover (pack of 4)
 to be used as dust cover

- for installation in the KeyStone patch panels, sockets, housing and so on
- plastic housing

black	79990	Bulk
white	79816	Bulk



Goobay
Keystone Frame, designable
 for holding 2 slim Keystone

- does not include module and central plate
- design suitable, compatible with TAE central plates made by switch range manufacturers
- 40° angled outlet

93825 Bulk



Goobay
Faceplate to mount keystone jacks
 for 2x RJ45 SNAP-IN modules

- to be mounted in cable duct

95902 Bulk



Goobay
Faceplate to mount keystone jacks
 for 3x RJ45 SNAP-IN modules

- to be mounted in cable duct

95903 Bulk



Goobay
Keystone on-wall mounting frame
 suitable for Keystone faceplate 80x80 2 port/3port

- includes 2 screws

96502 Bulk

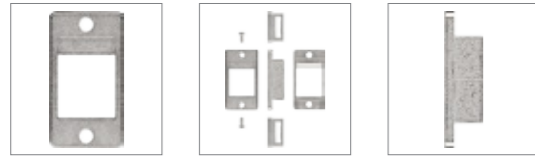




Goobay Keystone holder/bezel for device installation

suitable for 19.2 x 14.9 mm KeyStone port

- suitable for simple snap-in assembly of a KeyStone module
- two bores for screw fixing (28.9 mm apart)
- with integrated label field
- zinc die casting
- includes 2 screws



79883 Bulk



Goobay Keystone empty housing 1 port

with easy snap-in assembly

- for use on the wall or in housings
- 180° cable reel
- with label field



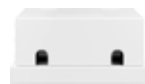
79355 Bulk



Goobay Keystone empty housing 2 port

with easy snap-in assembly

- for use on the wall or in housings
- 180° cable reel
- with label field



79366 Bulk



Goobay Keystone empty housing 4 port

with easy snap-in assembly

- for use on the wall or in housings
- 180° cable reel
- with label field



79376 Bulk



Goobay Keystone empty housing 6 port

with easy snap-in assembly

- for use on the wall or in housings
- 180° cable reel
- with label field



79379 Bulk



Goobay Keystone empty housing 8 port

with easy snap-in assembly

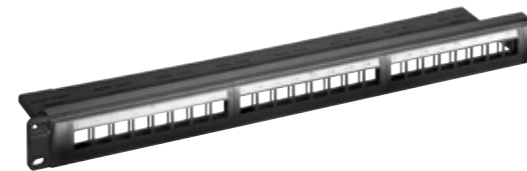
- for use on the wall or in housings
- 180° cable reel
- with label field



79426 Bulk



PANEL

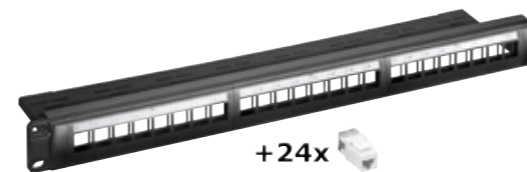


Goobay 19 inch (48.3 cm) Keystone blank Patch Panel (1 HE)

for 24x Keystone modules

- patch panel (1U) for up to 24 installation cablecampo patch (1 U) per max. 24 cavi di installazione
- suitable for easy snap-in mounting of 24 UTP/STP keystone jacks
- with LSA compatible terminals
- for assembly in 48.3 cm (19") panel boxes
- with labelling area
- installation material and screws included

95743 Bulk



Goobay 19 inch (48.3 cm) Keystone Patch Panel (1 HE)

incl. 24x CAT 6 UTP jacks

- patch panel (1U) for up to 24 installation cable
- suitable for easy snap-in mounting of 24 keystone jacks
- with LSA compatible terminals
- terminals with TIA 568 A/B color code
- with title block
- installation material and screws included

95336 Bulk



Wentronic GmbH
Pillmannstr. 12, 38112 Braunschweig, Germany

Tel/Fax +49 - 5 31 - 2 10 58 - 0/ -22
E-Mail: office@wentronic.com

wentronic.com